

SCHEDULE T – TRANSPORTATION AND MAJOR ROADS MAPS

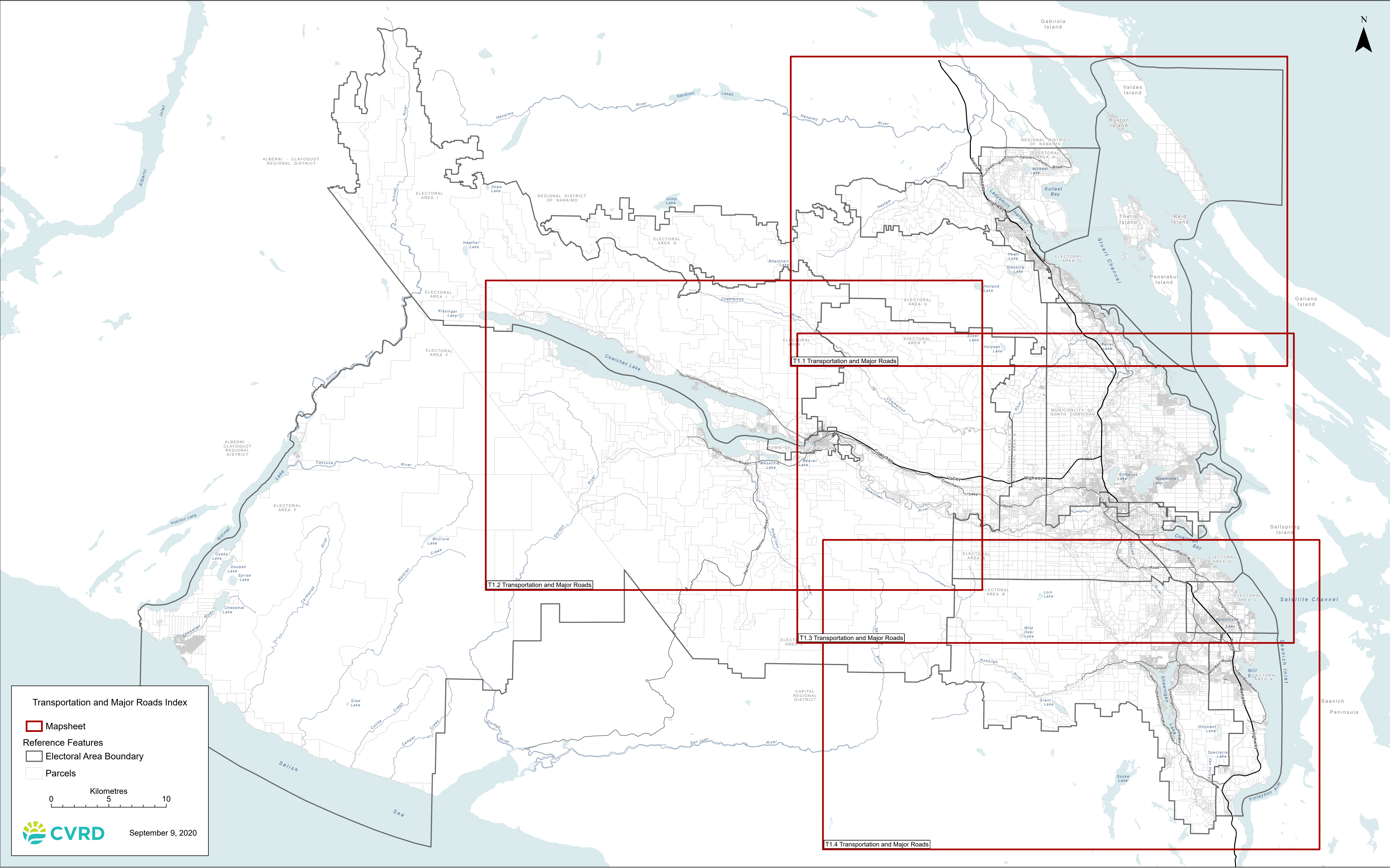
Table of Contents

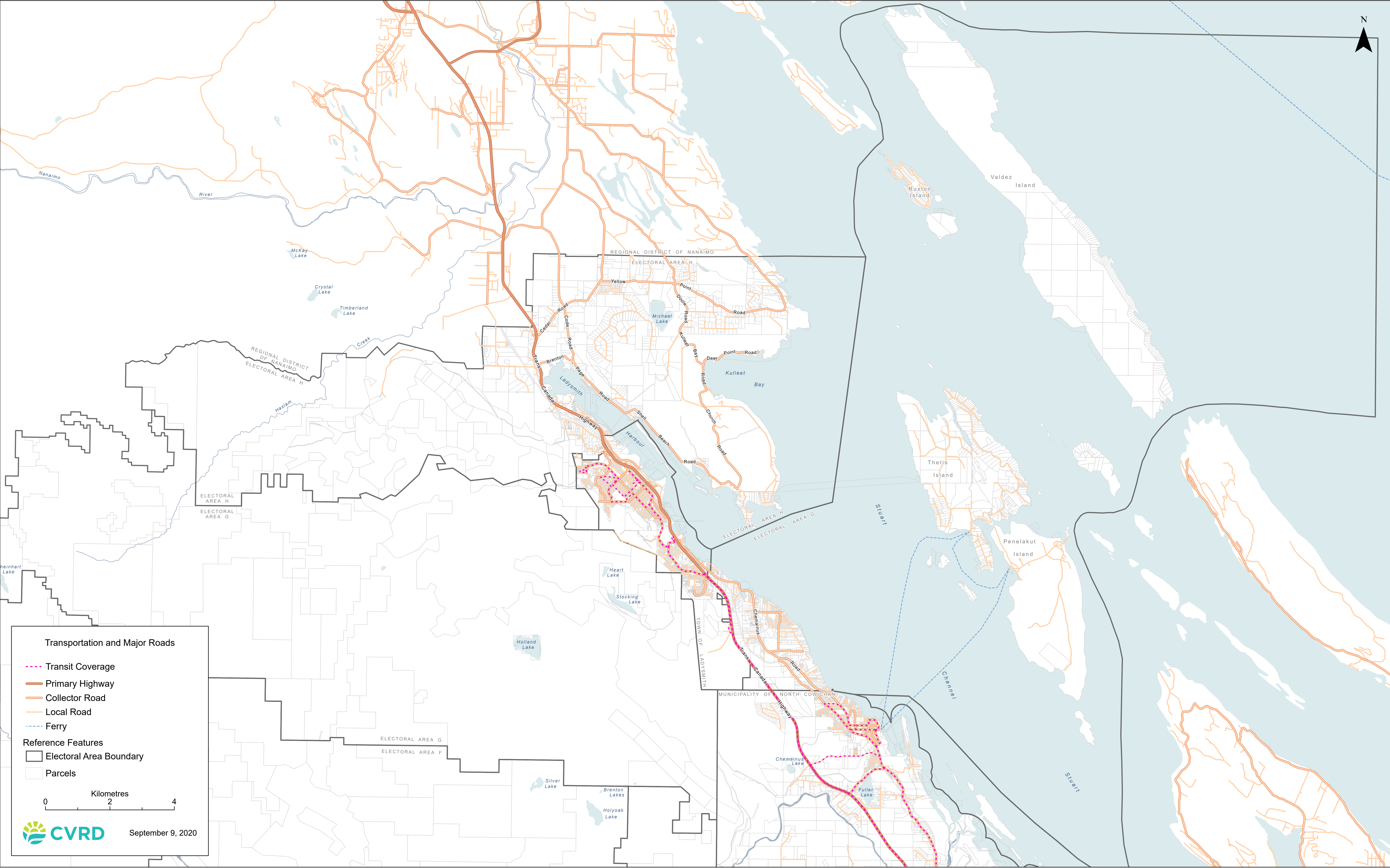
Introduction	3
T1 Transportation and Major Roads Index – Regional	4
T1.1 Transportation and Major Roads North – Regional	5
T1.2 Transportation and Major Roads West – Regional	6
T1.3 Transportation and Major Roads Central – Regional	7
T1.4 Transportation and Major Roads South – Regional	8
TA1 Transportation and Major Roads Index – Area A	9
TA1.1 Transportation and Major Roads North – Area A	10
TA1.2 Transportation and Major Roads South – Area A	11
TB1 Transportation and Major Roads Index – Area B	12
TB1.1 Transportation and Major Roads North – Area B	13
TB1.2 Transportation and Major Roads South – Area B	14
TC Transportation and Major Roads – Area C	15
TD1 Transportation, Major Roads, and Mobility Network Index – Area D	16
TD1.1 Transportation and Major Roads – Area D	17
TD1.2 Transportation and Mobility Network – Area D	18
TE1 Transportation and Major Roads Index – Area E	19
TE1.1 Transportation and Major Roads West – Area E	20
TE1.2 Transportation and Major Roads East – Area E	21
TF1 Transportation and Major Roads Index – Area F	22
TF1.1 Transportation and Major Roads Central – Area F	23
TF1.2 Transportation and Major Roads East – Area F	24
TG Transportation and Major Roads – Area G	25
TH Transportation and Major Roads – Area H	26
TI1 Transportation and Major Roads Index – Area I	27
TI1.1 Transportation and Major Roads West – Area I	28
TI1.2 Transportation and Major Roads East – Area I	29

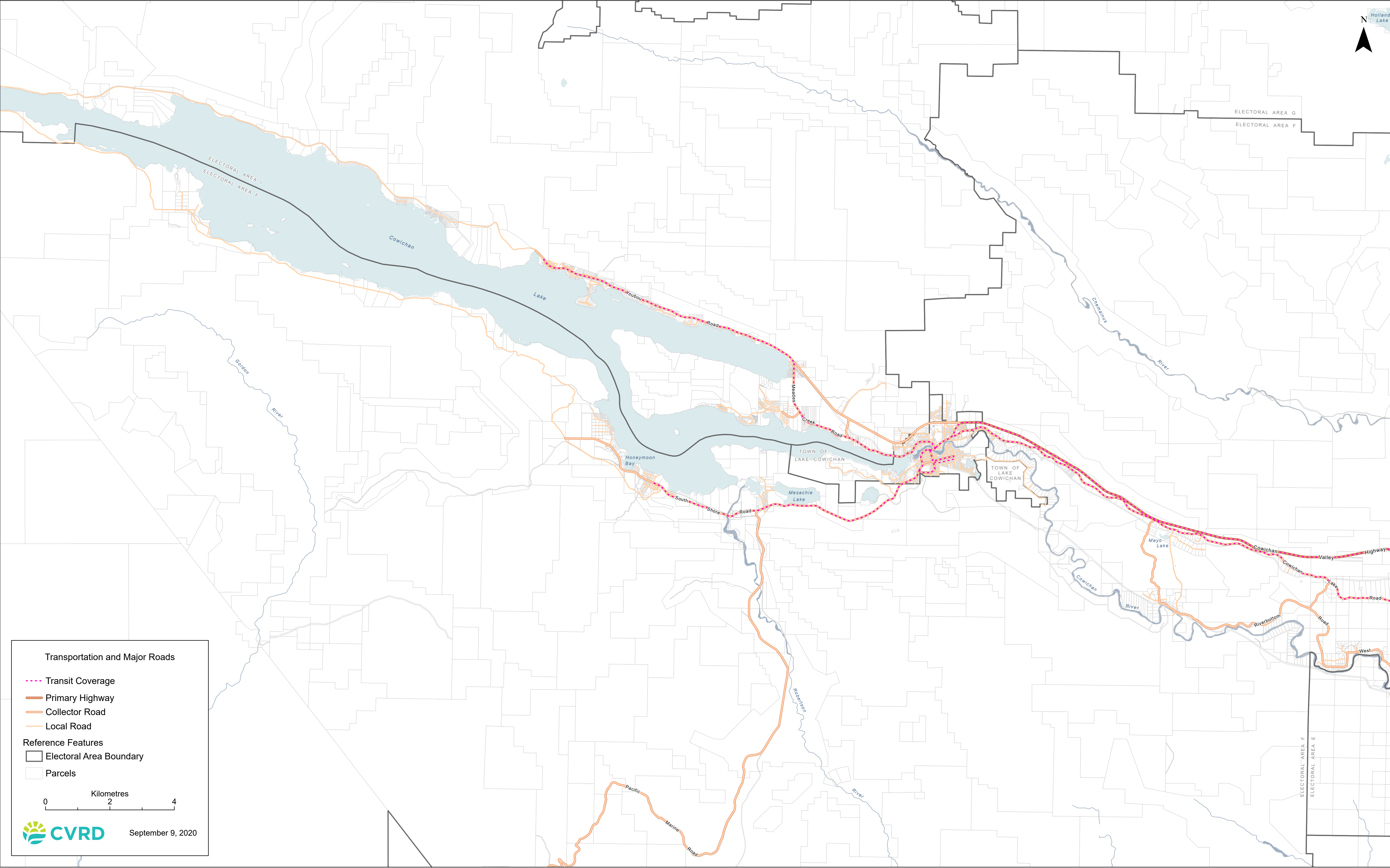
Introduction

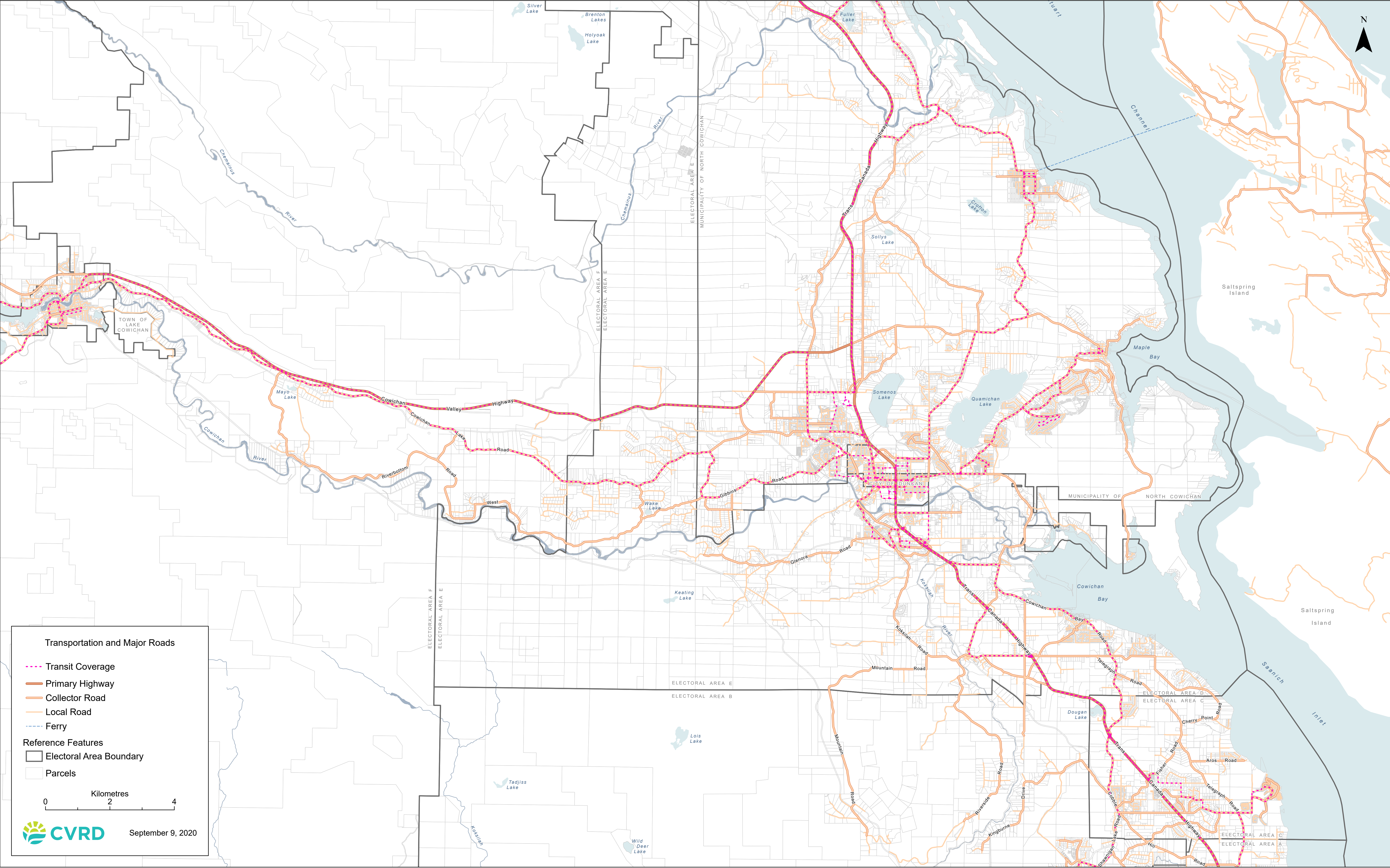
Schedule T contains regional and local area plan maps identifying Transportation and Major Roads in the Cowichan Valley Regional District. The map naming conventions indicate the Schedule letter, plan number, map number and sub-designation as follows.

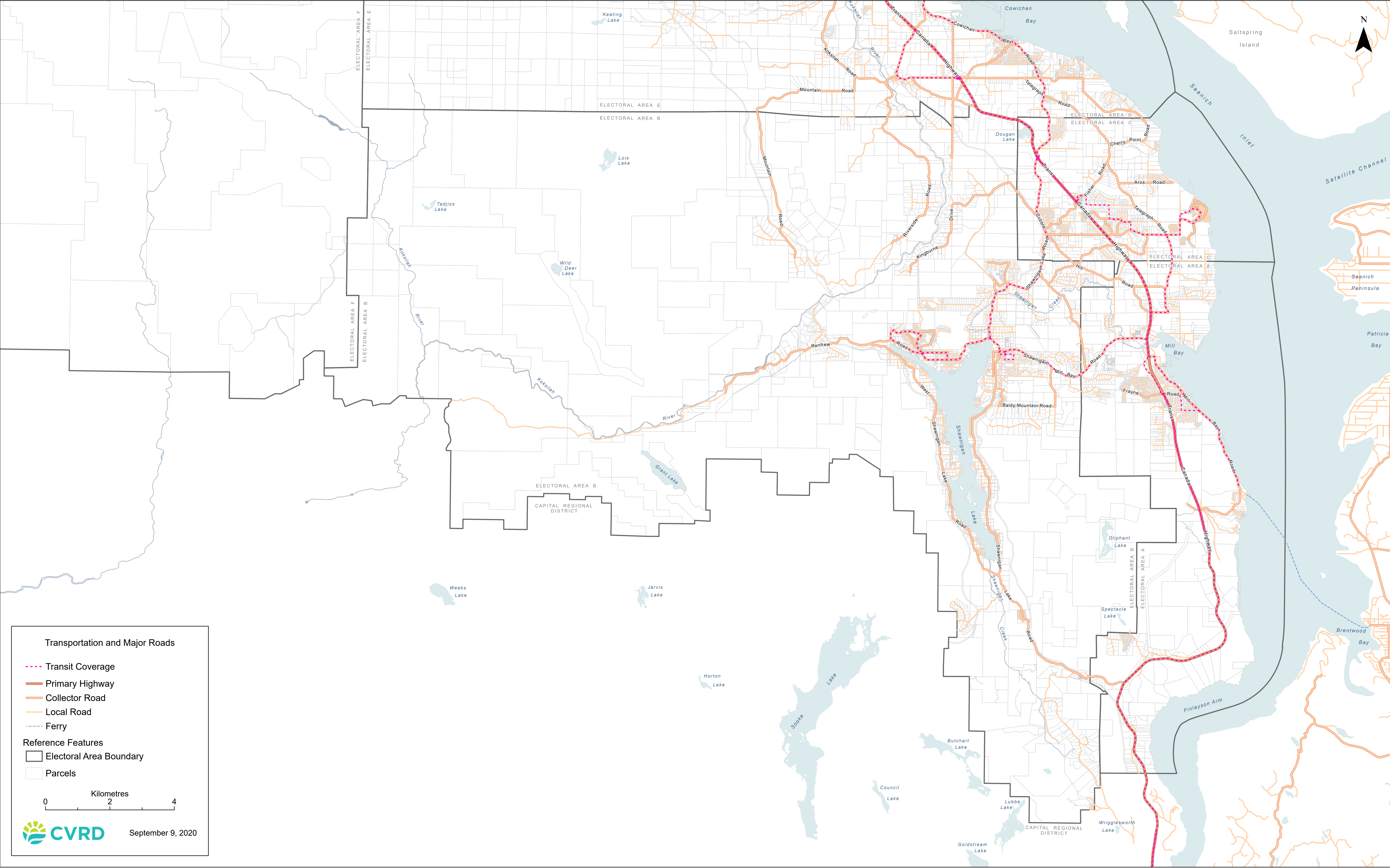
Map Identification Key				
Map name and number	Schedule	Local area plan / DPA number (if applicable)	Map number	Map sub- designation
T1 Transportation and Major Roads Index – Regional	T		1	
T1.1 Transportation and Major Roads North – Regional	T		1	1
TA1 Transportation and Major Roads Index – Area A	T	A	1	
TA1.1 Transportation and Major Roads North – Area A	T	A	1	1



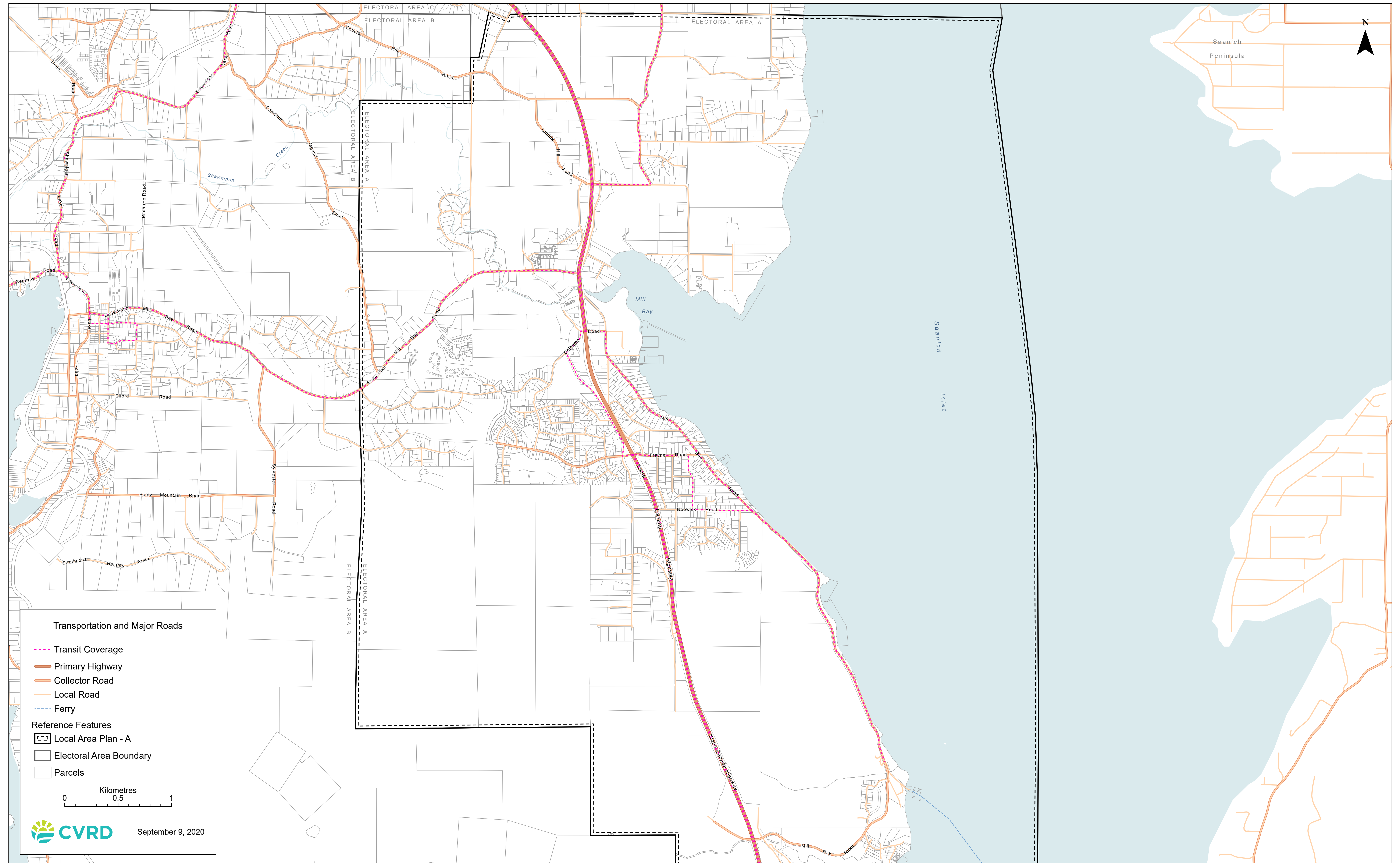


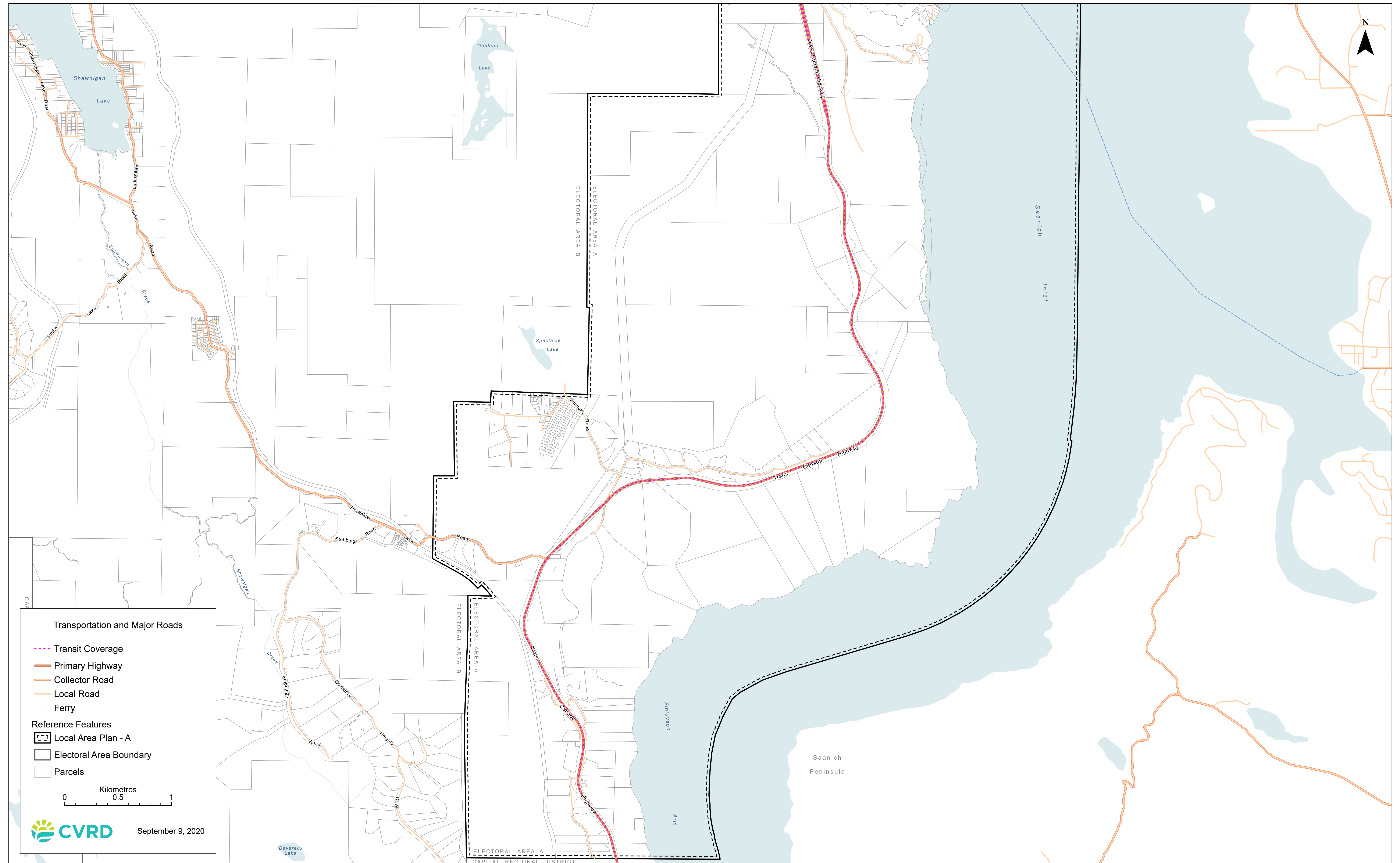


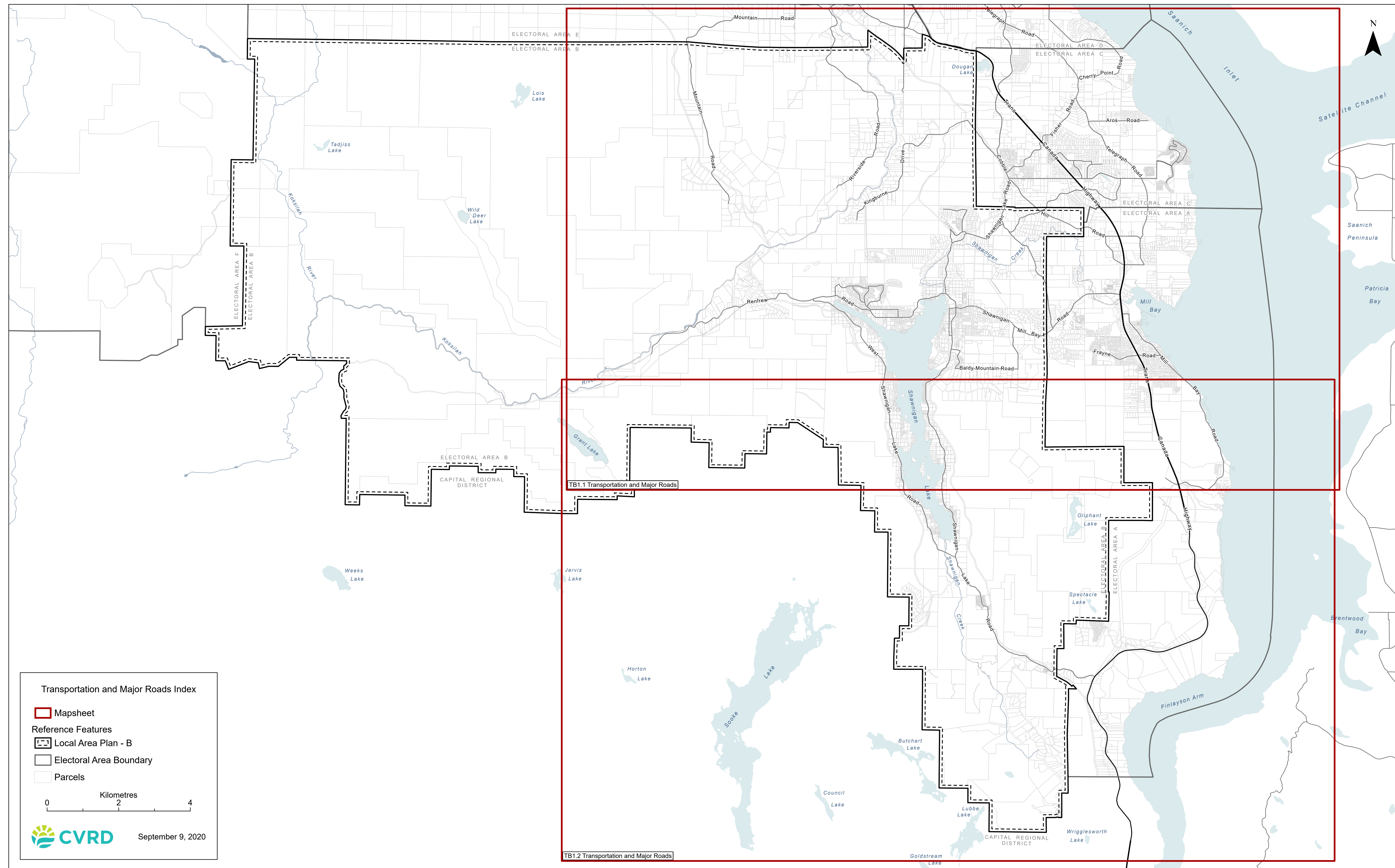


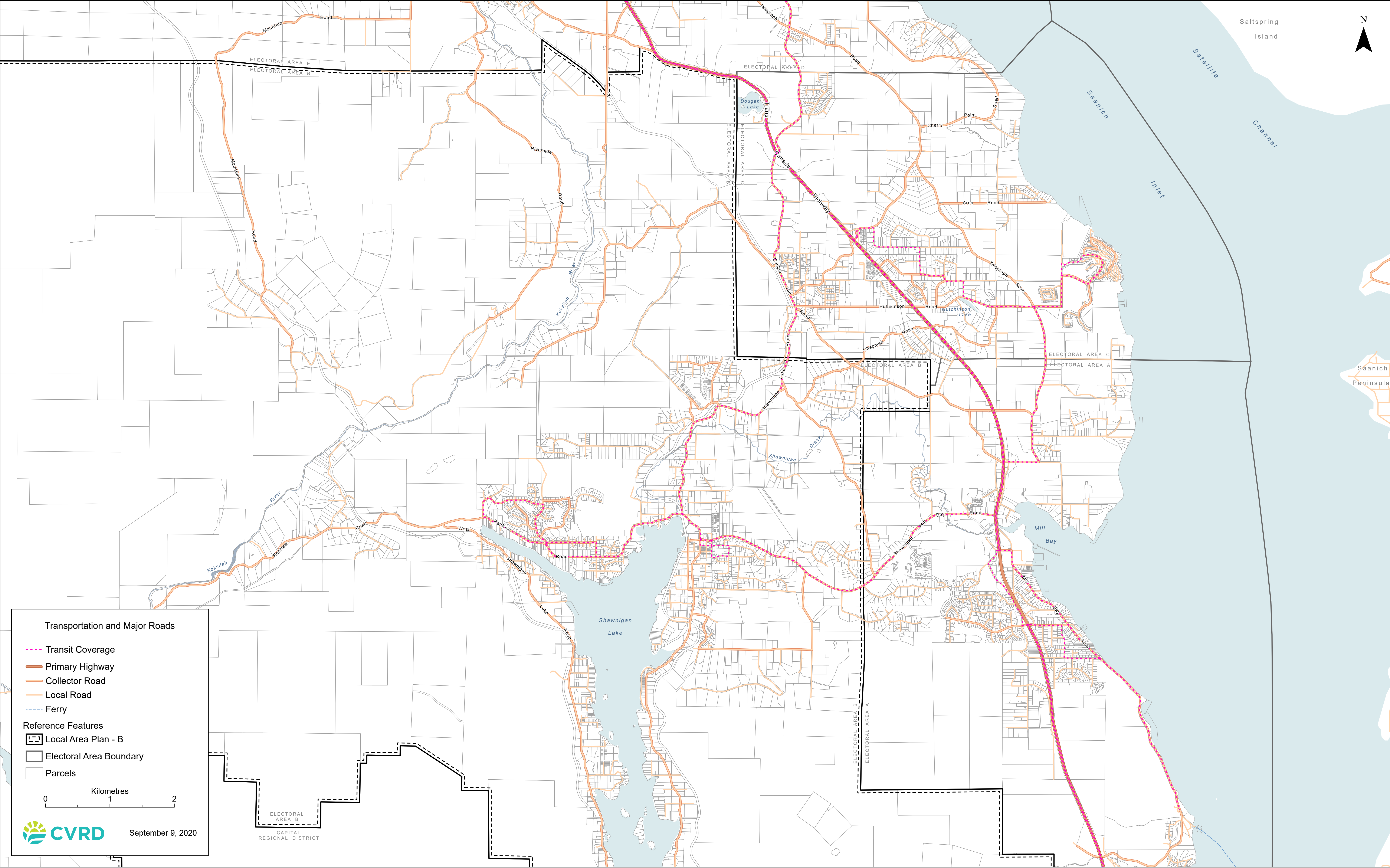


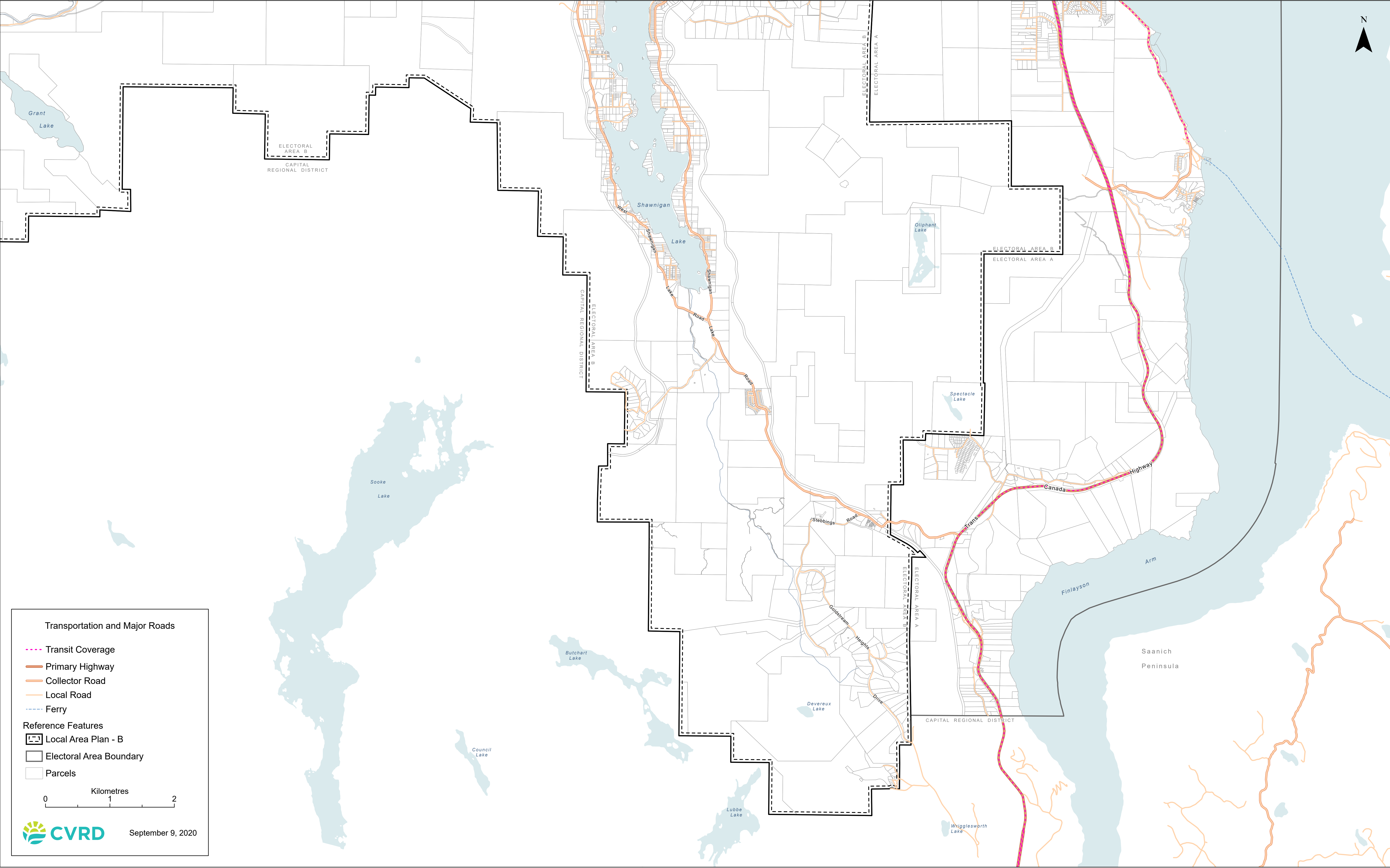
TA1.1 Transportation and Major Roads North - Area A

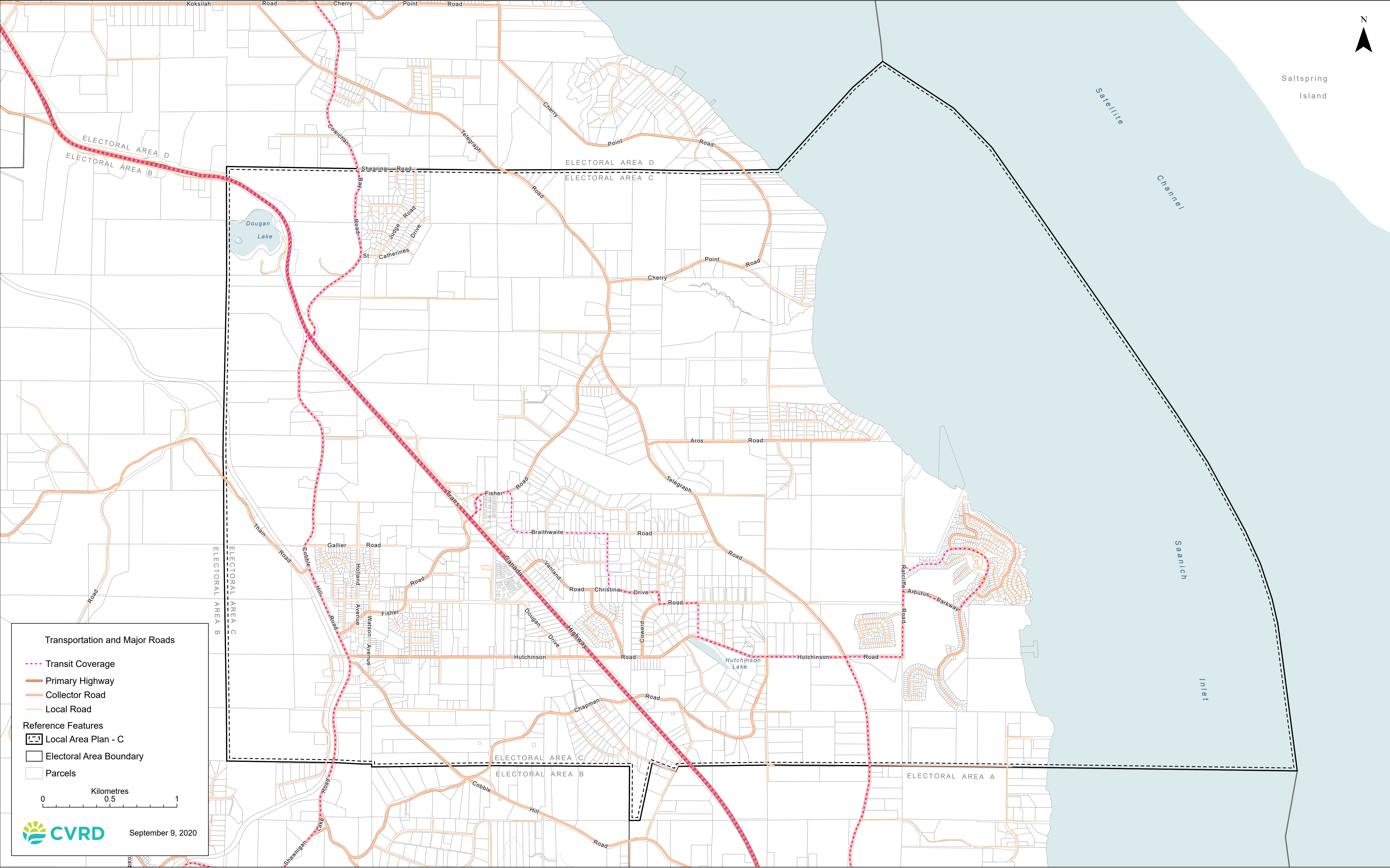


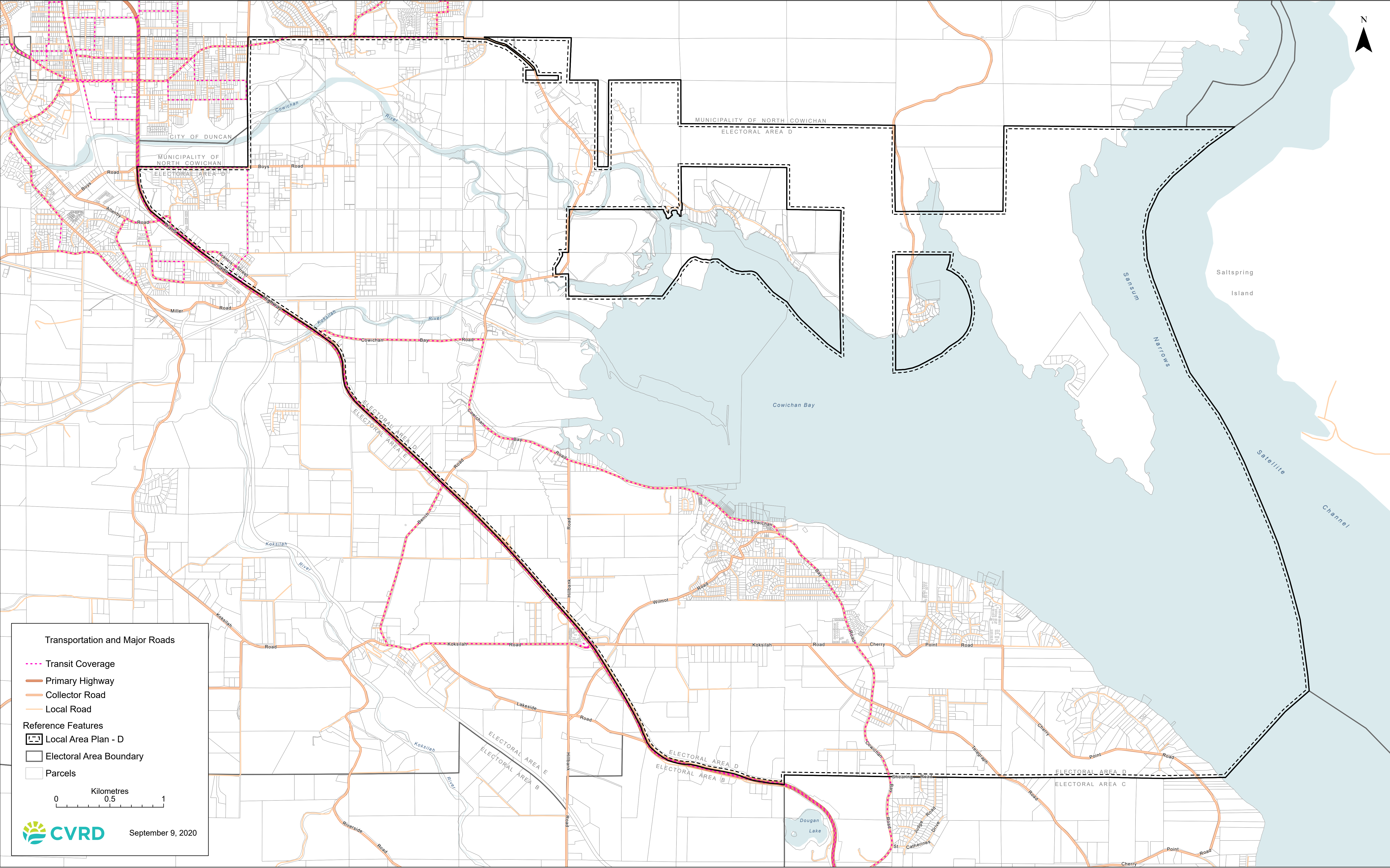












CVRD
Cowichan Valley
Regional District
Development Services
Department

ELECTORAL AREA D
Cowichan Bay
Schedule C-3

Transportation and Mobility Network

- Landmarks
- Bus Stops on Route 10 Cowichan Bay
- Bus Stops on Route 10 Highway 1
- Bus Route
- Existing Roadside Pathway
- Proposed Roadside Pathway
- Proposed Intercept Parking Areas
- Plan Area

0 250 500 1,000 4,000
Meters
0 1,000 2,000 4,000
Feet

This map is compiled from various sources for internal use and is designed for reference purposes only.
The Regional District does not warrant the accuracy.
All persons making use of this compilation are advised that amendments have been consolidated for convenience purposes only and that boundaries are representational.

The original Bylaws should be consulted for all purposes of interpretation and application of the Bylaws.

